

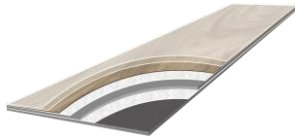
TECHNICAL DATA SHEET

Edition 07/2024

DIMENSIONS

FORMAT		Small Plank	Hexagon	Diamond
Width	ISO 24342:2018-11	65,33 mm	196 mm	196 mm
Length	ISO 24342:2018-11	261,33 mm	226,32 mm	113,16 mm
Number of panels per pack		116	44	132
m ² per pack		1,980 m ²	1,464 m ²	1,464 m ²
Weight per pack		8,14 kg	6,14 kg	6,10 kg
FORMAT		Triangle	Chevron	Parallelogram
Width	ISO 24342:2018-11	392 mm	92,4 mm	196 mm
Length	ISO 24342:2018-11	452,64 mm	522,67 mm	452,64 mm
Number of panels per pack		17	42	17
m ² per pack		1,508 m ²	2,028 m ²	1,508 m ²
Weight per pack		6,10 kg	8,17 kg	6,51 kg
FORMAT		Trapezoid	Big Hexagon	
Width	ISO 24342:2018-11	196 mm	392 mm	
Length	ISO 24342:2018-11	452,64 mm	452,64 mm	
Number of panels per pack		34	17	
m ² per pack		2,262 m ²	2,262 m ²	
Weight per pack		9,57 kg	9,57 kg	
Total mass per unit area	EN ISO 23997:2012-02	4065 g/m ² [-10%; +13%]		
Total thickness	ISO 24346:2006-10	2,5 mm		
Top layer	EN ISO 24340:2012-02	0,55 mm		

PANEL BUILD-UP



- 1 Top lacquer
- 2 PVC wearlayer
- 3 Design PVC layer
- 4 Glass fiber
- 5 PVC compact middle layer
- 6 Glass fiber
- 7 PVC backing

FACTORY WARRANTY

	METHOD	PARAMETERS	VALUES	
Usage class	EN ISO 10874		Class	23 - 33 - 42*
Product norm	EN ISO 10582:2018-01 (EN 16511)			
CE	EN 14041:2004 / AC:2006	Notified body	NB 2401 - CRET	DOP: see end label on pack
UKCA	EN 14041:2004 / AC:2006	Approved body	AB 0321 - Satra UK	DOP: see end label on pack
Warranty	Residential use Commercial use	See warranty conditions See warranty conditions	Lifetime 10	years

* Only valid for fully bonded installation, not on looselaid underlays

GENERAL DATA

	METHOD	PARAMETERS	NORM REQUIREMENTS	MODULEO VALUES
Squareness & straightness	EN ISO 24342:2018-11		≤400mm: ≤0,25 mm >400mm: ≤0,35mm	OK
Wearlayer	EN ISO 10582:2018-01		Type 1	OK
Wear resistance	EN 13329 - Annex E			≥ 2000 cycles
Impact resistance	EN 13329 - Annex F			≥ 1600 mm
Scratch resistance	EN 16094:2021-06			≤ MSR-A2 ≤ MSR-B1
Castor chairs	ISO 4918:2016-03	25000 cycles		No delamination, no disturbance
Displacement of furniture feet	EN ISO 16581:2019-06	Foot 0,1 mm / 32 kg		No visible damage
Residual indentation	EN ISO 24343-1:2012-01		≤ 0,1 mm	Average production result: 0,05 mm
Resistance against staining	EN 438-2:2016+A1:2018-12	Acetone - Coffee - NaOH - H2O2 - Shoe Polish		OK
Dimensional stability	EN ISO 23999:2021-11	6 hrs at 80 °C	≤ 0,25 %	Average production result: ≤ 0,05 %
Curling	EN ISO 23999:2021-11		≤ 2 mm	OK
Light fastness	ISO 105-B02:2014-09	Blue reference	Class ≥ 6	OK
Acoustic insulation	ISO 717-2	Impact sound reduction	Glued down On a Flex Pro underlay	ΔL _w = 3 dB ΔL _w = 10 dB
Floor heating		Appropriate for all standard heating systems IN cement subfloors. Limited application with heating films and alternatives. Max contact temp ≤ 27°C. See separate installation instructions.		

ENVIRONMENT, SAFETY & HEALTH

	METHOD	PARAMETERS	NORM REQUIREMENTS	MODULEO VALUES
AFFSET				A+
Floorscore				SCS-FS-02828
Finnish Building Emission			M1: Very low emission, odorless	OK
Formaldehyde emission	EN 717-1:2004-10	No added formaldehyde in production	E1 ($\leq 0,124 \text{ mg/m}^3$)	< Detection limit
TVOC 28 days	ISO 16000 part 9-6	AgBB requirement after 28 days $<1000 \mu\text{g}/\text{m}^3$		OK
Fire classification	EN 13501-1:2018			Bfl-s1
Thermal resistance	EN 12667:2001-01	Without underlay		0,01 $\text{m}^2 \text{K}/\text{W}$
Anti-static	EN 1815:2016-09		$\leq 2 \text{ kV}$	OK
Slip resistance	EN 13893:2002-11		$\mu \geq 0,30$	DS
	EN 16165:2021-10 Annex B			R9 - R10
	EN 16165:2021 - Annex C (UKSRG)	Wet	PTV ₉₆	Low (PTV ₉₆ ≥ 36) or Moderate (35 \geq PTV ₉₆ ≥ 25) slip potential
		Dry	PTV ₉₆	Low slip potential (PTV ₉₆ ≥ 36)
	UNE-EN 16165:2021 - Annex C	Dry	PTV ₉₆	PTV ₉₆ ≥ 56
Content	Anexo Nacional A (ES)			NOT present
Dangerous substances	Heavy metals + lead/cadmium			NOT present
REACH	Carcinogenic, mutagenic or reprotoxic substances class 1A and 1B (candidate list)			Compliant
Recycled content	Regulation (EC)			$\geq 20\%$
	Only INTERNAL recycled material used			

